

THANK YOU FOR PURCHASING ERICA SYNTHS BLACK SERIES MODULE!

Erica Black Series include high-end, unique functionality and superior quality modules. Only the best, highest quality components are used, all inputs and outputs are protected against undesired overvoltage. When designing Black Series, we did not economy on module width, we put design and usability superior. Big knobs are assigned to functions that make difference in sound. Erica Black series consist of range of modules that are needed to put together entire synth. Enjoy!

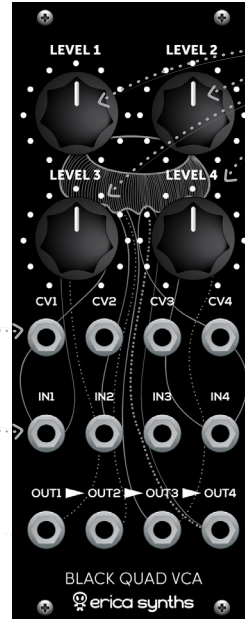
Erica Synths Black Quad VCA is the module, you need, if you wish to shape the sound in advanced ways, and you want to save some rack space. This module, despite its compact size, is designed in line with Black Series Hi-Fi philosophy. Our custom pre-emphasis – de-emphasis circuits preserve all nuances of the original signal, we have introduced unique automatic mixing of outputs and configurable CV addressing. If no CV is applied, Black Quad VCA performs as a signal mixer, as well. Use it together with Erica Black Dual EG/LFO and you have compact, top quality setup!

FEATURES:

- 4 independent VCAs
- Manual signal and CV level adjustment
- Pre-emphasis – de-emphasis circuits on all 4 channels
- Automatic output mixing
- Configurable CV addressing

Apply CV signals from EG, LFO or any modulator here! Use jumpers on the back of the VCA to pre-configure the VCA to your needs! See configuration instructions below!

Patch your audio signals here.

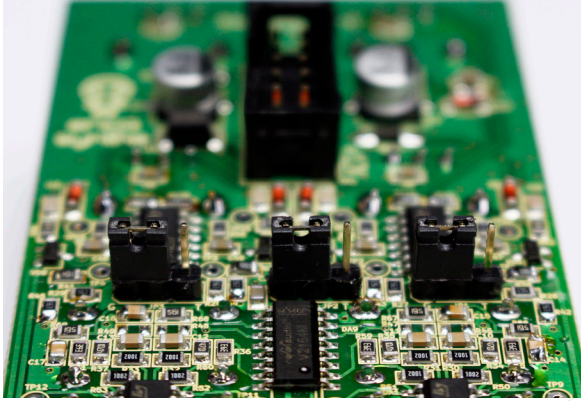


Use LEVEL knobs to adjust CV level for each channel! If no CV is applied, level knobs manually open each VCA, and you can use the module as a signal mixer. In that case knobs will be effective from 12 o'clock.

These are VCA outputs. Interesting thing is that outputs are automatically mixed to the next output to the right, if nothing is plugged in the relevant output. Meaning, if you wish to have all outputs mixed together, you plug the cable in OUT4 only. If you plug a patch cables in OUT2 and OUT4, you get independent sums of VCA1+VCA2 and VCA3+VCA4. If you have patch cables in all 4 outputs, you have 4 independent VCAs.

SPECS:

- CV level.....-10V – +10V
- Attenuation level:
- CV = 0V (max attenuation)..... -90dB
- CV = +10V (unity gain)..... 0dB
- Response.....lin
- Power consumption..... +62mA, -60mA
- Module width.....10HP
- Module depth.....25mm



Use these jumpers to configure CV addressing! CV1 always is independent and normalised to the GND, but CV2 – CV4 are configurable. If the jumper is on the left (as shown on the picture) side, it means the CV Input is normalised to the GND and therefore the CV Input is independent. If the jumper is on the right side, it means the CV Input switching lug is normalised to the next to the right CV Input. Therefore, if no patch cable is plugged in the relevant CV Input, it will follow the CV signals from the CV Input on the left. This means that you can use the single CV signal plugged in CV1 to control all four CV Inputs simultaneously. Also, you can configure CV Inputs for «stereo» application, when CV2 is normalised to CV1, CV3 is independent and CV4 is normalised to CV3.

SAFETY INSTRUCTIONS

Please follow the instructions for use of this Erica Synths module below, 'cause only this will guarantee proper operation of the module and ensure warranty from Erica Synths.



Water is lethal for most of the electric devices, unless they are made waterproof. Erica Synths module is NOT intended for use in a humid or wet environment. No liquids or other conducting substances must get into the module. Should this happen, the module should be disconnected from mains power immediately, dried, examined and cleaned by a qualified technician.



Do not expose the module to temperatures above +50° C or below -20° C.



Transport the instrument with modules installed carefully, never let it drop or fall over. Warranty does not apply to modules with visual damages.



The module has to be shipped in the original packaging only. Any module shipped to us for return, exchange and/or warranty repair has to be in its original packaging. All other deliveries will be rejected and returned to you. Make sure you keep the original packaging and technical documentation.

You will find Erica Synths terms of warranty at www.ericasynths.lv.

Items for return, exchange and/or warranty repair have to be sent to: Erica Synths, Andrejostas Str.12, Riga, Latvia, LV-1045

DISPOSAL

This device complies to the EU guidelines and is manufactured RoHS conforming without use of led, mercury, cadmium and chrome. Nevertheless, this device is special waste and disposal in household waste is not recommended.

Designed and made in Latvia.
User manual by Girts Ozolins@Erica Synths.

Design by Ieva Andrupe.

Copying, distribution or any commercial use in any way is prohibited and needs the written permission by Erica Synths.
Specifications are subject to change without notice.

In case of any questions feel free to contact us via e-mail
info@ericasynths.lv

Check out other Erica Synths modules & devices at
www.ericasynths.lv