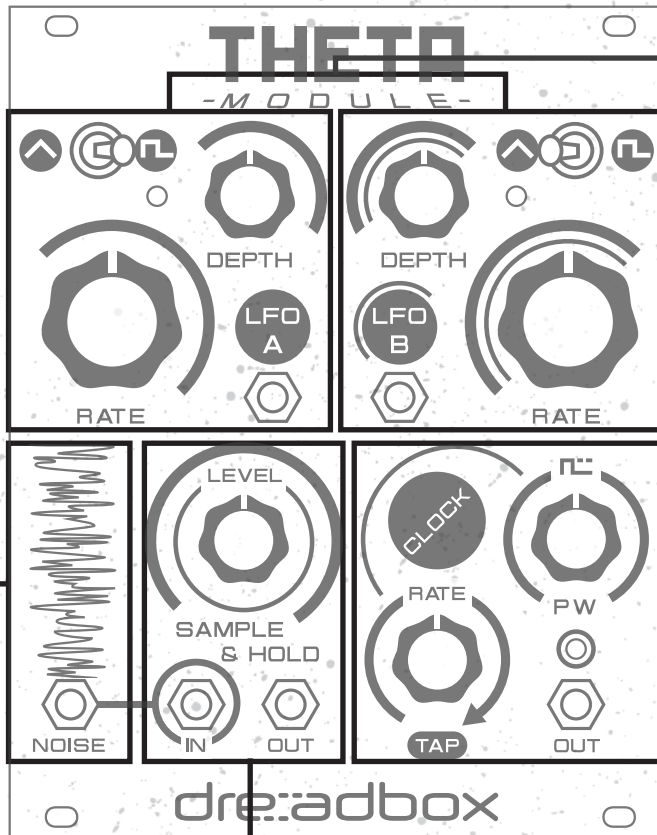


Theta is eurorack (3U) module.
It is an utility module, which is equipped with 2 LFO, a noise source,
Sample & Hold and a tap clock with variable PW.



// LFO A+B //
Depth: Sets the LFO amount
Rate: Sets the LFO Rate
Toggle switch: LFO wave selector
Patch: LFO Output

// CLOCK //
Theta's clock determines S&H behaviour by its rate and PW knobs.
Rate: Determines clock's rate (clockwise for slower speeds).
Tap at least 3 times for tap tempo.
PW: Sets the clock's pulse width
Out: Direct clock output

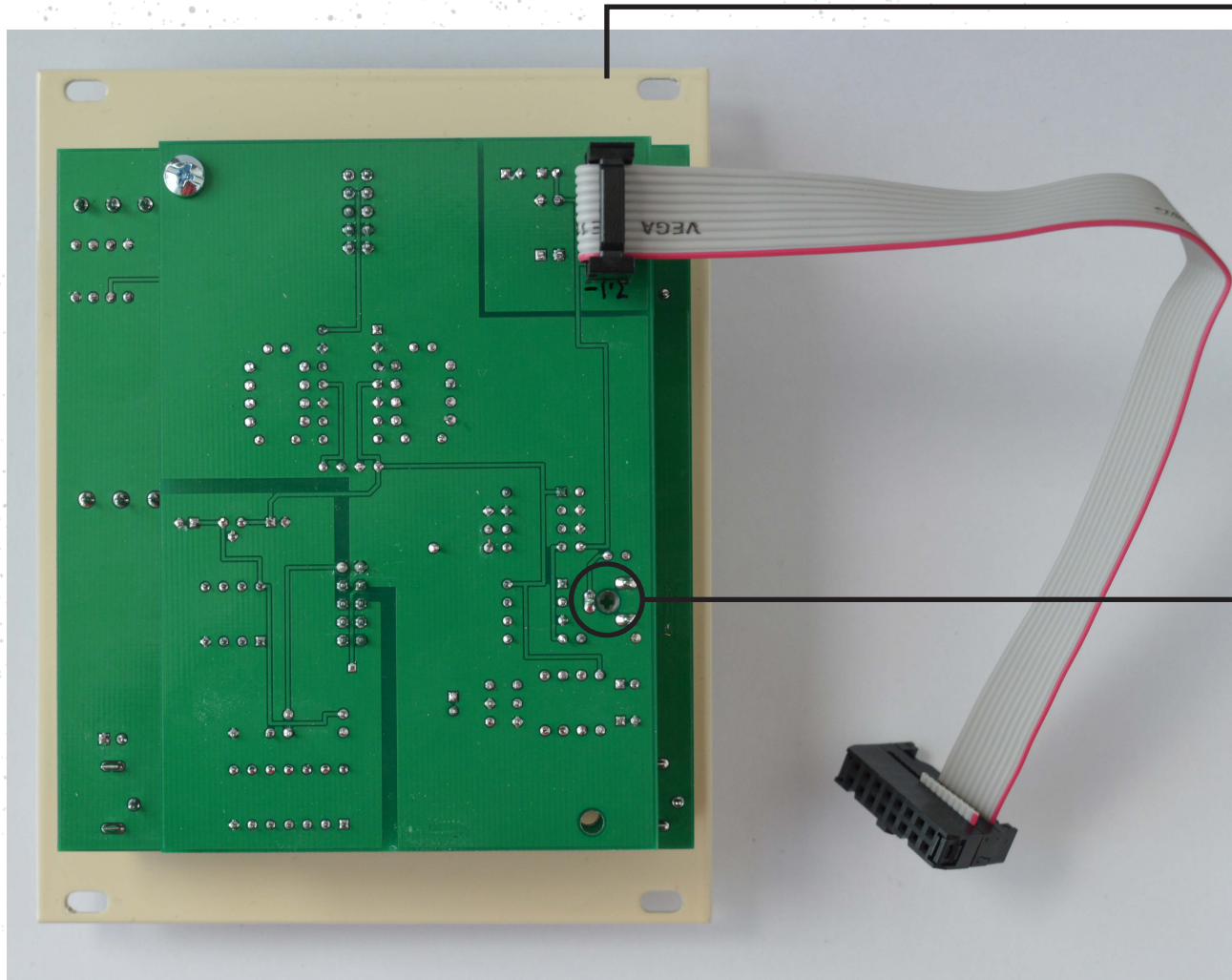
// WHITE NOISE SOURCE //
White noise Output patch
By default the noise is
handwired to the input.

// SAMPLE & HOLD //
Level: Sets the total amount of S&H Voltage
In: Insert a source to be sampled
Out: S&H output voltage

★ Specifications ★

- LFO Range: 25sec – 50Hz
- Sample & Hold: accepts up to 10Vpp inputs
- Clock Range: 2sec – 3000Hz
- Clock Out: 0-5V pulse
- Noise Out: 10Vpp
- 20 HP





Make sure you always plug
the ribbon as shown.
The red stripe indicates -12V

White Noise Level
trimmer