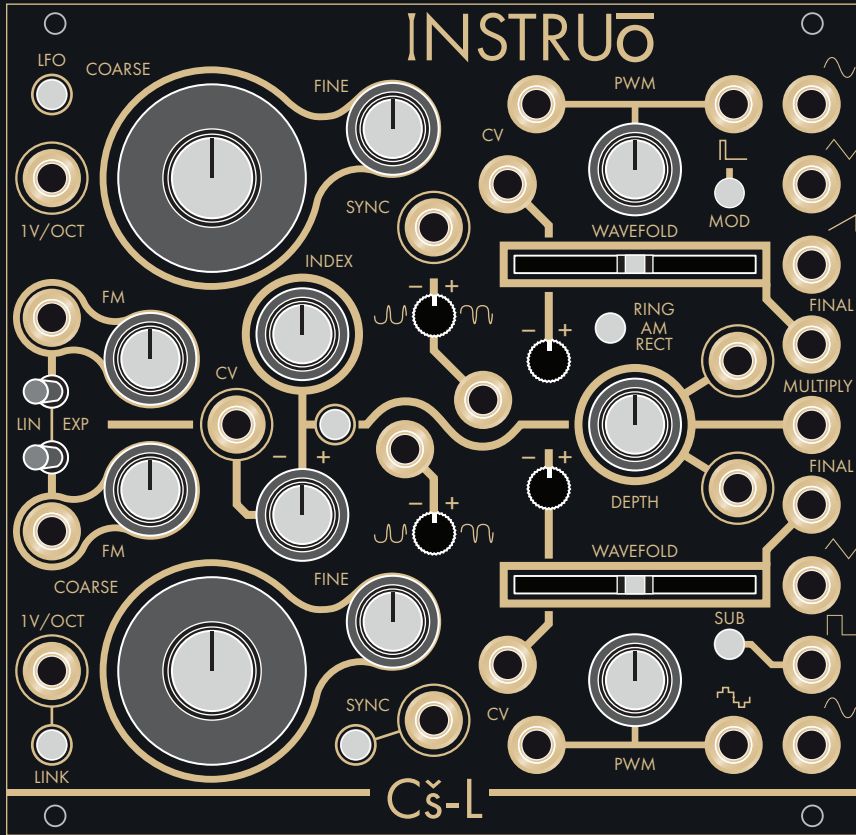


# CŠ-L

## Complex Oscillator

| si:~əz-əl | proverb (derivative)  
 "complex sauce-later" (see Tš-L)



|  |   |
|--|---|
|  | <b>MOD BUTTON</b><br>USED TO SET INTERNAL ROUTING THROUGH INDEX VCA TO PWM CV INPUTS                    |
|  | UNILLUMINATED -<br>ROUTING DISABLED   |
|  | ILLUMINATED WHITE -<br>OSC A SINEWAVE ><br>OSC B PWM CV INPUT<br>OSC B SINEWAVE ><br>OSC A PWM CV INPUT |
|  | ILLUMINATED AMBER -<br>OSC A SINEWAVE ><br>OSC B PWM CV INPUT   |

|  |   |
|--|---|
|  | <b>RING/AM/RECT BUTTON</b><br>DETERMINES THE AMPLITUDE MODULATION MODE FOR MULTIPLY MODULATOR INPUT |
|  | UNILLUMINATED -<br>BIPOLAR MODULATION   |
|  | ILLUMINATED WHITE -<br>HALF WAVE RECTIFICATION  |
|  | ILLUMINATED AMBER -<br>FULL WAVE RECTIFICATION  |

**LFO**

ILLUMINATED WHITE -  
OSC A OUTPUTS  
SUB AUDIO  
FREQUENCIES

**SYNC**

OSC A HARD SYNC  
FROM OSC B

**SYNC**

OSC B SOFT SYNC  
FROM OSC A

**LINK**

UNILLUMINATED - LINKING IS DISABLED  
 ILLUMINATED WHITE - 1V/OCT INPUTS CONTROL  
 BOTH OSC A AND OSC B  
 (IF BOTH PATCHED, OSC WILL TRACK INDEPENDENTLY)



# INTERNAL MODULATION ROUTING

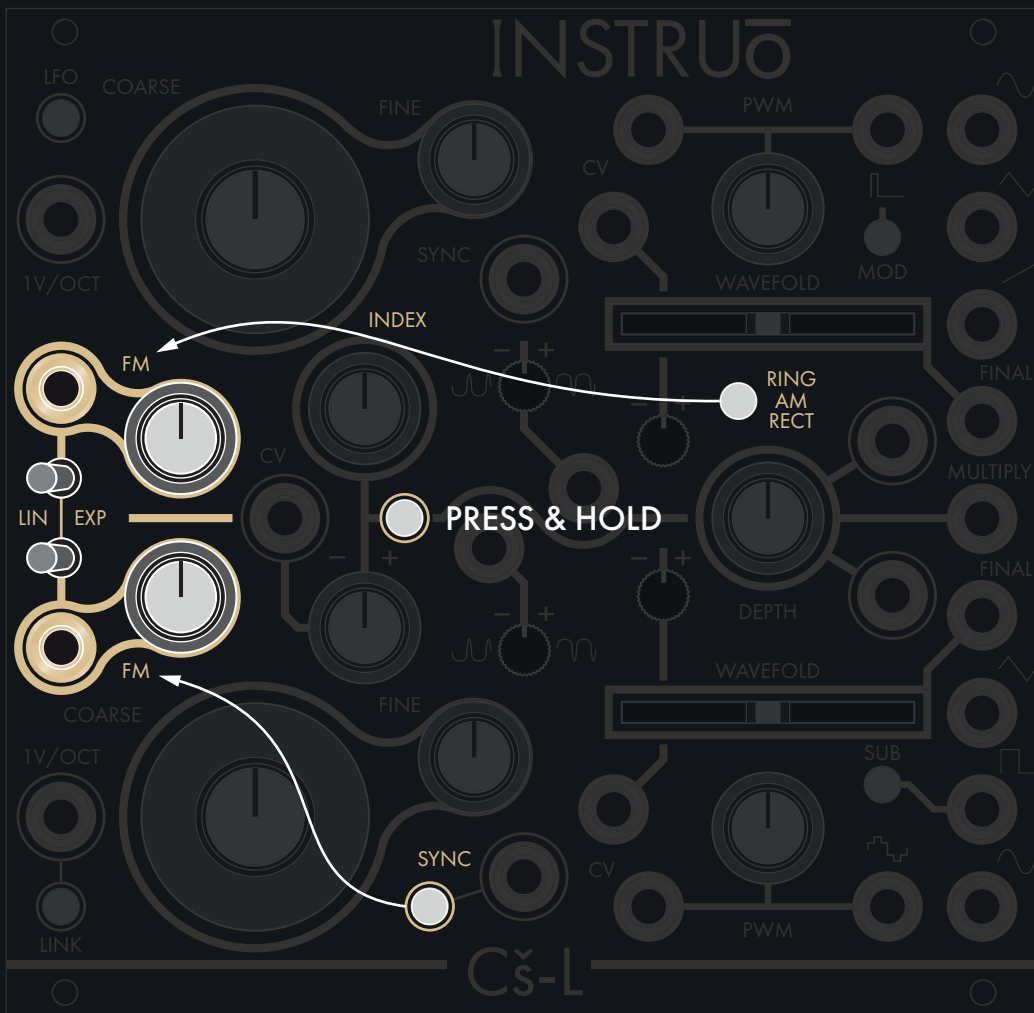
## INDEX



THE **INDEX** BUTTON FUNCTIONS AS A “SHIFT” CONTROL. WHEN PRESSED THE CORRESPONDING BUTTONS ILLUMINATE TO DISPLAY THE ROUTING CURRENTLY ENABLED.

ROUTING CAN BE ENABLED / DISABLED BY TOGGING THE ASSOCIATED BUTTON.

THE **INDEX** CONTROLLED SINE WAVEFORMS ARE USED FOR INTERNAL MODULATION (OSC A CAN MODULATE THE PARAMETERS OF OSC B, AND VISE VERSA).



## RING AM RECT



THE **RING/AM/RECT** BUTTON IS USED TO ENABLE / DISABLE THE MODULATION ROUTING TO THE FM INPUT OF OSC A.

(WHEN DISABLED, THE SINE WAVEFORM OF OSC B IS DIRECTLY NORMALLED TO THIS DESTINATION AND NOT CONTROLLED BY THE **INDEX** PARAMETER).

## SYNC



THE **SYNC** BUTTON IS USED TO ENABLE / DISABLE THE MODULATION ROUTING TO THE FM INPUT OF OSC B.

(WHEN DISABLED, THE SINE WAVEFORM OF OSC A IS DIRECTLY NORMALLED TO THIS DESTINATION AND NOT CONTROLLED BY THE **INDEX** PARAMETER).

# INTERNAL MODULATION ROUTING

LFO



THE LFO BUTTON IS USED TO ENABLE / DISABLE MODULATION ROUTING TO THE SYMMETRY BIAS INPUT OF OSC A.

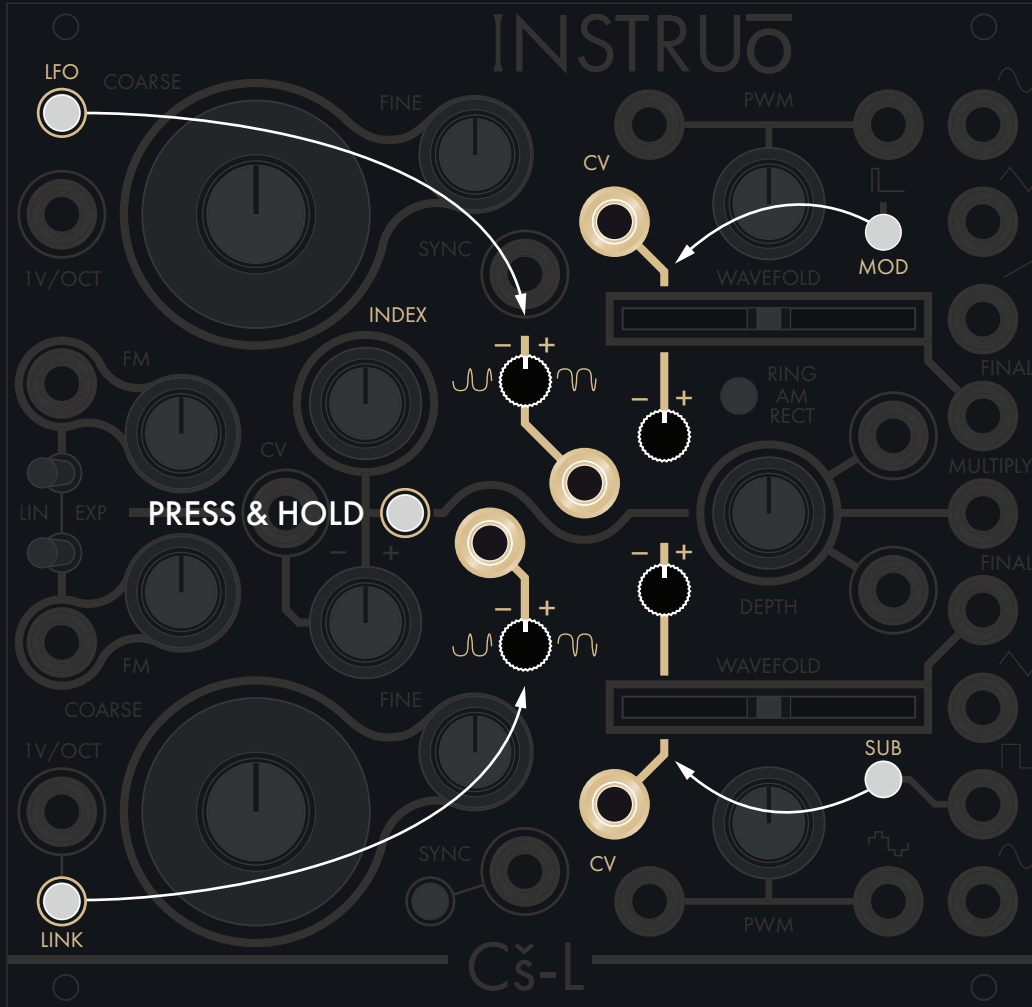
THE MODULATION SIGNAL REPLACES THE DEFAULT REFERENCE VOLTAGE. THE SYMMETRY BIAS ATTENUVERTER WILL CONTROL THE INVERSION AND DEPTH OF THE INDEX MODULATION SIGNAL.

LINK



THE LINK BUTTON IS USED TO ENABLE / DISABLE MODULATION ROUTING TO THE SYMMETRY BIAS INPUT OF OSC B.

THE MODULATION SIGNAL REPLACES THE DEFAULT REFERENCE VOLTAGE. THE SYMMETRY BIAS ATTENUVERTER WILL CONTROL THE INVERSION AND DEPTH OF THE INDEX MODULATION SIGNAL.



MOD



THE MOD BUTTON IS USED TO ENABLE / DISABLE THE MODULATION ROUTING TO THE WAVEFOLD CV INPUT OF OSC A

SUB



THE SUB BUTTON IS USED TO ENABLE / DISABLE THE MODULATION ROUTING TO THE WAVEFOLD CV INPUT OF OSC B

